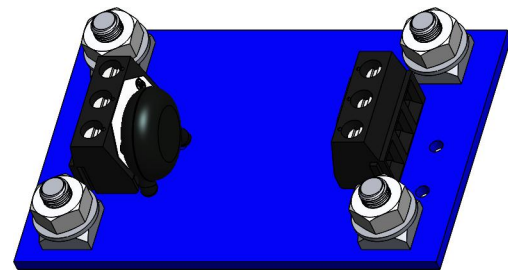
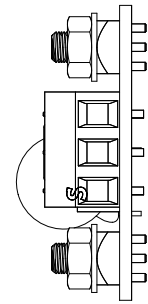
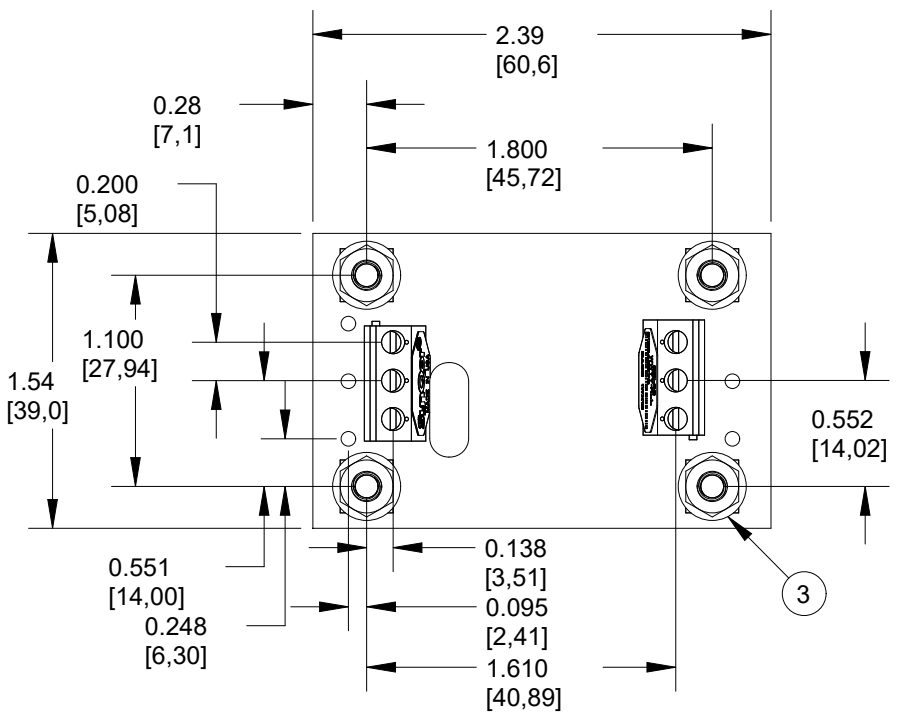
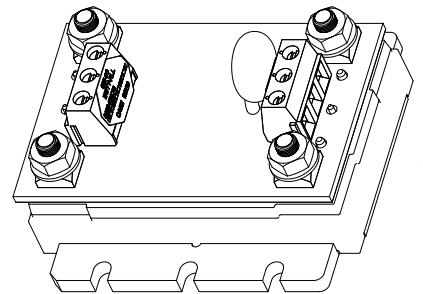
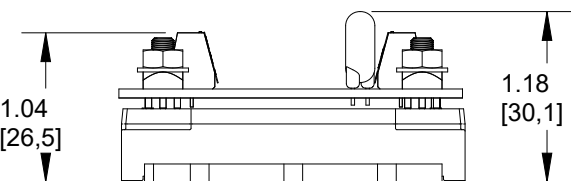
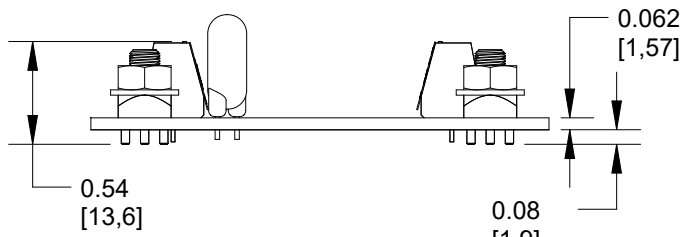


REVISIONS			
REV	DESCRIPTION	DATE	APPROVED
1	INITIAL RELEASE PER ECO 19-25187	5/24/19	DS
A	ADD NOTE 7, COMPONENT Z1, RELEASE TO REV A PER ECO 20-26371	04/03/20	K.DUBROWN

A



B



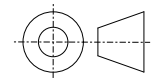
NOTES:

- CONSULT DATASHEET OF THE UNIT THAT THE INTERFACE BOARD IS / WILL BE MOUNTED TO FOR I/O DEFINITIONS, MOUNTING DIMENSIONS AND OPERATING PARAMETERS.
- ALL DIMENSIONS IN INCHES (MM)
TOLERANCES: X.XX ± .02 IN. (X.X ± .5mm)
X.XXX ± .010 IN. (X.XX ± .25mm)
- TERMINALS 1, 3, 4, 8: M4 SCREW POST, MAX TORQUE 6 IN-LB (.7 Nm).
- TERMINAL BLOCKS: WIRE SIZE 16-30 AWG, 13.5A MAX CURRENT PER TERMINAL, MAX TORQUE 4 IN-LB (.5 Nm)
- FITS BOTH NORMAL AND FLANGED QUARTER BRICKS
- ADAPTOR WEIGHT: 1.02 oz (29 g)
- ROHS COMPLIANT

TOLERANCES:

Unless otherwise specified:
All dimensions in inches
.X +/- .025
.XX +/- .010
.XXX +/- .005
Angles +/- 1°

THIRD ANGLE PROJECTION



THIS DRAWING IS THE PROPERTY OF SYNQOR INC.
It is not to be reproduced or copied, in whole or in part, or used for furnishing information to others, or for any purpose detrimental to the interests of SynQor. The information shown herein may be protected by patents owned or controlled by SynQor.



155 Swanson Road
Boxborough, MA 01719

**QBI-06 AC FILTER INTERFACE ASSY.
THROUGH HOLE MOUNTING**

SOURCE: PRO/E 020-0000251

SIZE	DATE	DWG. NO.	REV
A	APR-03-20	020-0000365	A
SCALE: 1.000	DRAWN: DS	CHECK:	SHEET 1 of 1

C